

# Archaeological Services

## Deri Jones & Associates Ltd

3D Laser Scanning|Marine Structures|3D CAD|3D Visualisation



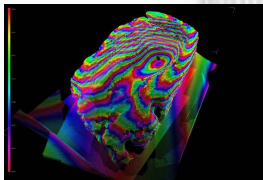
### Summary

Deri Jones & Associates and GeoSpatial Survey Solutions (DJA/GSS) can offer a range of measurement services for archaeologists. Working from our survey van, we are independent of power or lighting requirements and work with portable equipment to record remote sites.



### Servies

**Detail Laser Scanning:** We offer close range, high accuracy scanning using a Minolta Vi910 scanner, suitable for recording carvings, sculptures and detailed objects. Objects are typically recorded at <0.5mm point density and high accuracy. Processed data can be created in point cloud or STL mesh format suitable for rapid prototyping or visualisation work.



**3D Laser scanning:** Using our FARO LS880 and Mensi GS200 scanners, we can quickly capture large sites. With full colour data captured by digital SLR camera and high resolution point clouds, the level of detail captured is exceptional. The Faro Laser scanner can be mounted on our 12m mast to gain the ability to capture clear scans of subtle ground detail, or enter attic spaces or confined areas without the need for scaffolding or lighting. All scanning is controlled using Leica total station surveys, enabling us to tie in to existing site control. We also offer a service to include traditional topographic survey, with RTK GPS control for larger sites.

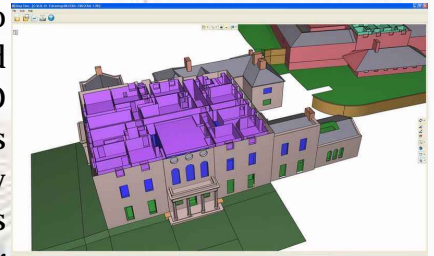


**Mast photography:** With the ability to remotely control a digital SLR camera from

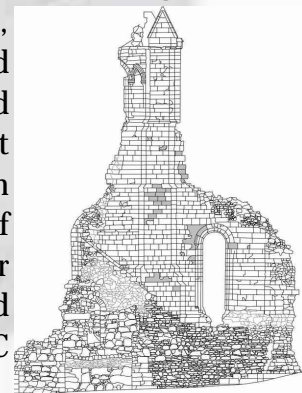


the top of our 12m (36') mast, we can supply site photography from a different angle. Mast photography can be carried out at the same time as laser scanning, or we offer it as a separate service.

**Visualisation:** With a full range of software enabling us to model and manipulate 3D digital models from a variety of sources including sketches, 2D Cad drawings, survey data or laser scan data, we can supply still images, animations and interactive 3D content for a variety of purposes. Site photography can be incorporated in to photomontages, with accurate positioning of camera, perspective and range.



**CAD services:** We offer a full range of 2D and 3D CAD services, producing drawings and models. 2D data is supplied as AutoCAD DWG format or PDF and 3D data can be supplied as a variety of interactive formats or suitable for rapid prototyping or CNC processing.



All survey work is carried out using the latest 3D Laser scanning equipment, working to the highest accuracy. Our survey kit is robust and survey work can be carried out in typical site conditions. We have four years experience of providing laser scanning solutions, with a client base including English Heritage, Scottish National Heritage and a variety of architectural heritage and archaeological practices.

For further information on projects we have completed and the skills and technology used, please visit our website at [www.djaweb.co.uk](http://www.djaweb.co.uk) If you have any queries or would like to discuss any projects we may be able to assist with, please call or email Deri Jones on +44 (0)870 762 0089 or [info@djaweb.co.uk](mailto:info@djaweb.co.uk)